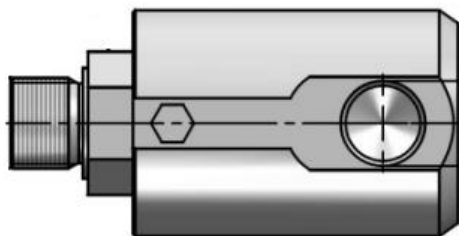
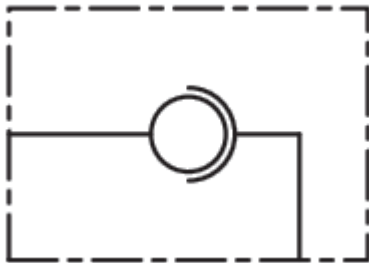


Rotary coupling

90°

AGG 90



1/4" - 3/8" - 1/2" - 3/4" - 1"

USE AND OPERATION

These valves are mounted between the end of a flexible hose and a fixed component to compensate the hose's rotations and torsions and to prevent its damaging. **They are not suitable for fast and continuous rotations.** They are used in every production field where systems have flexible moving hose. 90° mounting.

MATERIALS AND FEATURES

Body: zinc-plated steel

Tightness: low friction seals

APPLICATION

Connect ports P to the uses.

ON REQUEST

NPT thread

Type	Max. flow L/min.	Max. rotation pressure Bar	Max. pressure Bar	Max. rotation speed Turn/min.	Weight kg
AGG 90 1/4"	25	200	400	212	0,312
AGG 90 3/8"	35	200	400	173	0,418
AGG 90 1/2"	60	150	300	160	0,522
AGG 90 3/4"	100	150	300	120	0,898
AGG 90 1"	180	100	300	100	1,122

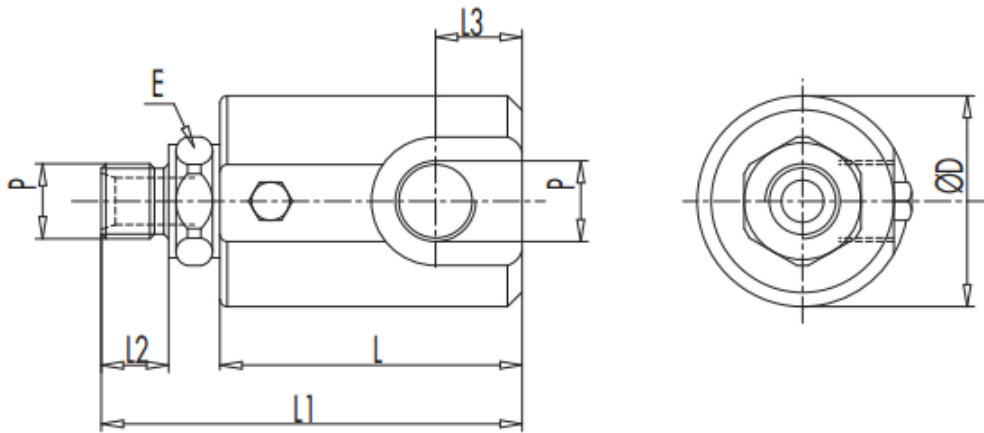
Rotary coupling

90°

AGG 90



DIMENSIONS



Type	P GAS/BSP	L mm	L1 mm	L2 mm	L3 mm	E mm	ØD mm
AGG 90 1/4"	1/4"	50	69	11	11	19	34
AGG 90 3/8"	3/8"	54	76	14	13	24	38
AGG 90 1/2"	1/2"	63	87	15	14	27	40
AGG 90 3/4"	3/4"	70	100	19	18	34	55
AGG 90 1"	1"	80	113	21	25	41	60